



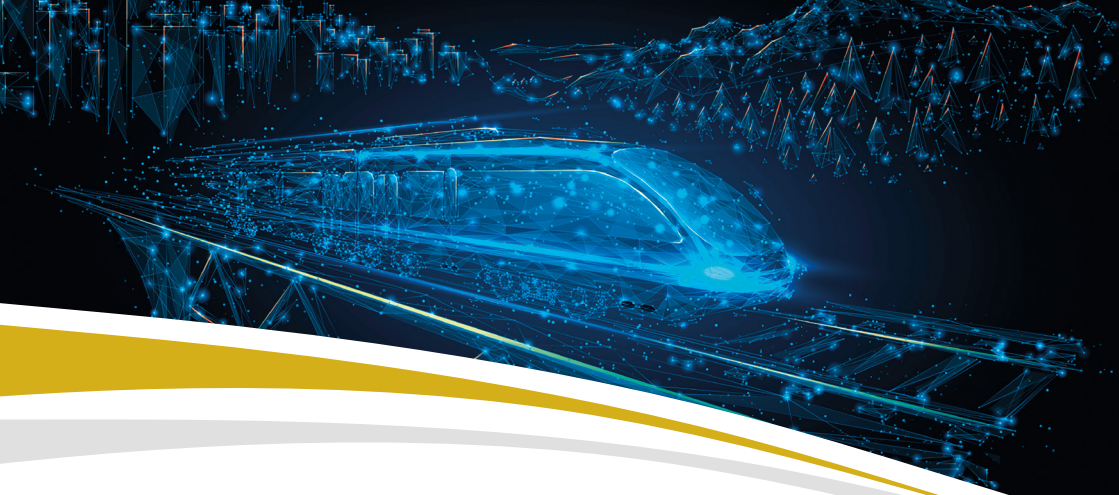
SFW LAB



## **SFW Lab Ltd. – Your Partner in Smart Railway & Road Infrastructure Monitoring & integrated GIS Solutions**

**Company Snapshot** SFW Lab Ltd. is member of the IMG Solution company group. The Hungarian systems integrator group with over 15 years of experience in delivering innovative IT and engineering solutions. SFW Lab with more than 25 software engineers and a dedicated R&D focus, we specialize in mission-critical technologies for transportation, public administration, and utilities. Our approach is rooted in industry best practices, agility, and a commitment to tailored digital transformation.





## Core Solutions

- **TrackIntelligence 3.1 - Geographic Information System,** modern containerized, autoscaling architecture based on GNU licensed software components; Various railway system register modules; Process supporting Workflow module; external interfaces; more than 200 map layers; customisable user interface; automated measurement data and georeferenced visualisation; Various display modes: map view, panoramic image display, point cloud view, distorted sketch view, ERA/RINF/ETCS compatibility
- **DELTA 1.2 – High-Speed Track Inspection** Computer Vision powered stereo-camera system for locomotives, capable of detecting railway objects, calculating the position of the objects, detections compared with reference database.
- **DELTA 2.0 – Next-Generation Rail Monitoring** A revolutionary sensor-fusion platform designed for under-instrumented rail networks.

### Simultaneously inspects:

- Overhead line geometry & infrastructure
  - Wheel-track dynamics & rail integrity
  - Vegetation hazards, intrusion zones, and predictive growth trends
- **Road-Based Pothole Detection** Advanced real-time solution for road network infrastructure assessment.



## Software Development Highlights

- **25+ engineers with deep expertise in:**
  - Geospatial development (PostGIS, GeoServer, OpenLayers)
  - Computer vision (YOLO, TensorFlow, PyTorch)
  - Enterprise interfaces & integration (ReactJS, Angular, TIBCO ESB)
  - Scalable, sensor-integrated platforms
- **Full-stack capabilities across** Back End, Middleware, Front End, AI, DevOps & Testing
- **Agile delivery of secure, high-performance systems**

SFW LAB

**Turning Data Into Vision.  
Maps Into Meaning.**



## Why Work With Us?

---

- **Proven Innovation:** We build solutions few others can.
- **Cutting-Edge Technology:** Real-time rail infrastructure monitoring using various sensors and edge computing.
- **Enterprise Clients:** Trusted by Hungarian Railways (MÁV Plc.) and Rail Cargo Hungaria Plc.
- **Market Readiness:** We're seeking for international partners and go-to-market alliances.



## Contact

---

Ádám Strelisky – CEO | [strelisky.adam@sfwlab.hu](mailto:strelisky.adam@sfwlab.hu)

Zsolt Palánki – Business Development | [palanki.zsolt@sfwlab.hu](mailto:palanki.zsolt@sfwlab.hu)

[www.imgsolution.hu/sfwlab](http://www.imgsolution.hu/sfwlab)